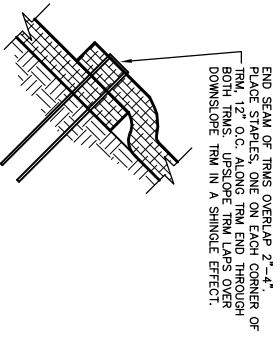


SLOPE DETAIL
NO SCALE

1
5

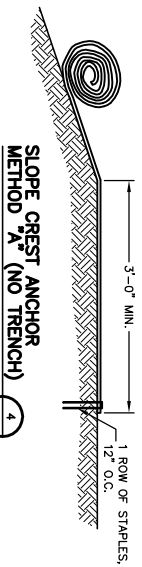
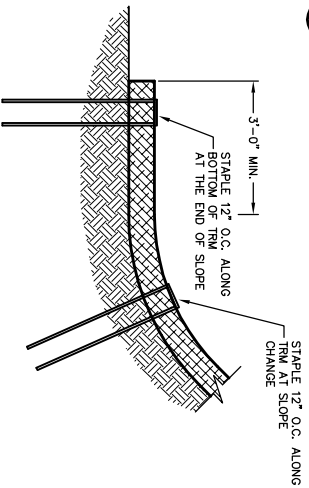


END ROLL OVERLAP
NO SCALE

2
5

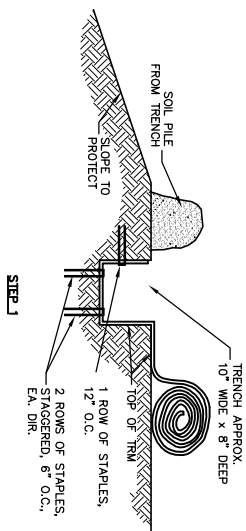
BOTTOM OF SLOPE TERMINATION
NO SCALE

3
5



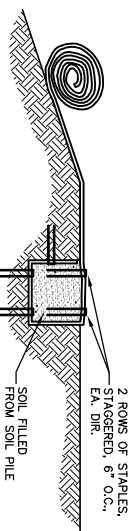
SLOPE CREST ANCHOR METHOD "A" (NO TRENCH)
NO SCALE

4
5



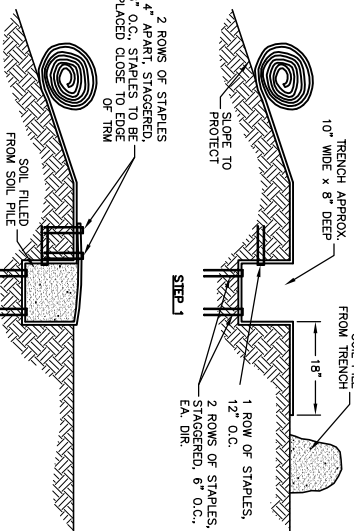
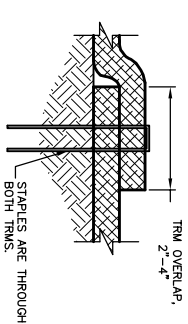
SLOPE TRENCHING METHOD "B"
NO SCALE

5
5



SIDE SEAM OVERLAP STAPLE DETAIL
NO SCALE

7
5



SLOPE TRENCHING METHOD "C"
NO SCALE

6
5



NOTES:
1. STAPLE PATTERNS ARE DEPENDENT ON SITE CONDITIONS. SEE RECYCLEX® TRM STAPLE PATTERN GUIDE FOR DETAILS.

AMERICAN EXCELSIOR COMPANY
ARLINGTON, TEXAS

SHEET DESCRIPTION
RECYCLEX® TRM
SLOPE APPLICATION DETAIL

DATE 1/7/03
SCALE NONE
PROJECT NO. 5
SHEET NO. 5



NO.	BY	DATE	REVISIONS

PROJECT MANAGER	CHECKED BY	APPROVED BY

PROJECT MANAGER	CHECKED BY	APPROVED BY

PROJECT MANAGER	CHECKED BY	APPROVED BY

PROJECT MANAGER	CHECKED BY	APPROVED BY