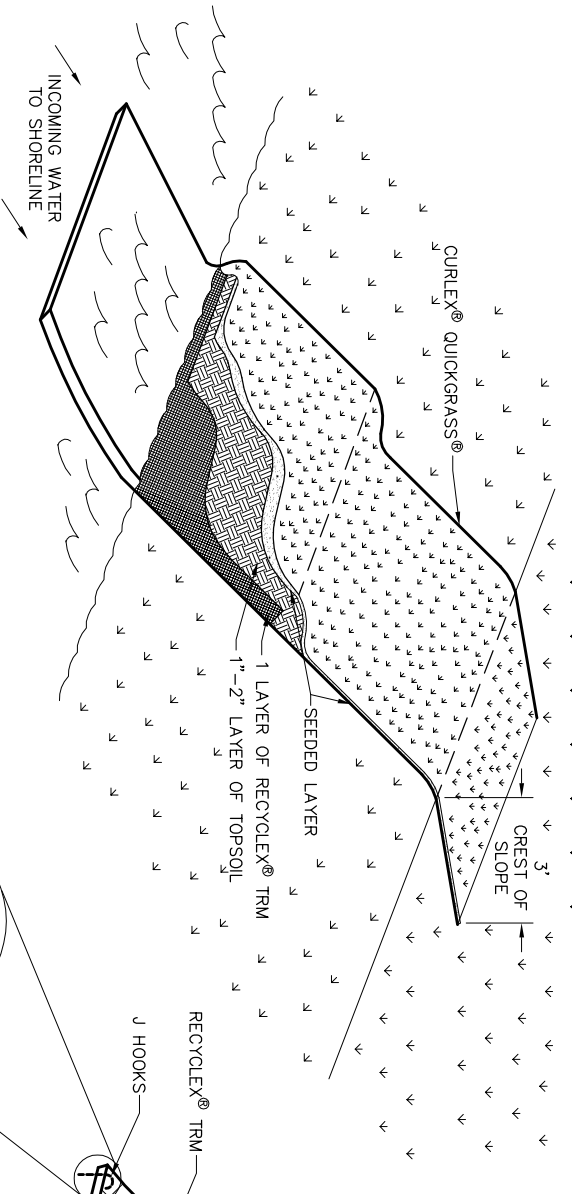


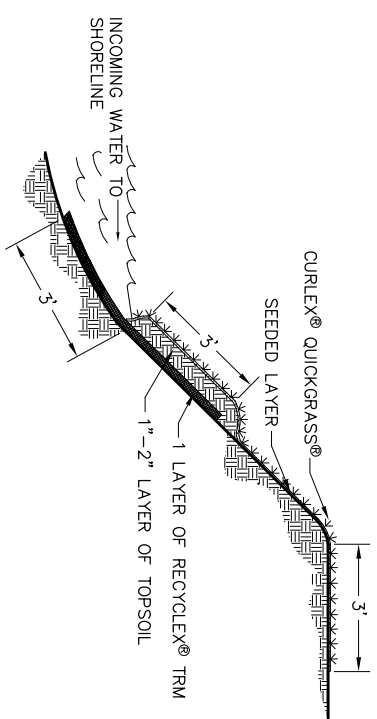
NOTE:

1. INSTALL LAYER OF RECYCLEX® TRM 8' WIDTH, A MINIMUM OF 3' BELOW NORMAL POOL & A MINIMUM 3' ABOVE NORMAL POOL.
2. INSTALL #3 (3/8) REBAR J-HOOKS (15" LENGTH WITH 3" CROWN) BELOW WATERLINE ALONG THE OUTSIDE EDGE OF RECYCLEX® TRM EVERY 4 LINEAL FEET AND REPEAT AT EDGE OF THE WATERLINE.
3. ABOVE THE WATERLINE ANCHOR THE RECYCLEX® TRM LAYER.
4. ABOVE WATERLINE, SOIL FILL TOPSOIL OVER RECYCLEX® TRM SO IT INTERMINGLES INTO AND ABOVE THE PERMANENT MATRIX 1"-2"
5. SEED TOPSOIL LAYER THAT WAS PLACED ON TOP OF RECYCLEX® TRM AND REMAINDER OF DISTURBED SLOPE WITH A MIXTURE SUITED FOR SITE CONDITIONS.
6. BEGINNING AT THE WATERLINE INSTALL CURLEXY® QUICKGRASS® BLANKETS OVER THE SEED/TOPSOIL LAYER TO PROMOTE IDEAL GROWING CONDITIONS FOR GRASS SEED ON THE SLOPE ABOVE THE WATERLINE. TO PROTECT THE REMAINING BARE SOIL CONTINUE THE INSTALLATION OF CURLEXY® QUICKGRASS® BLANKETS UNTIL IT HAS REACHED 3' OVER THE CREST OF THE SLOPE AND ANCHOR.
7. STAPLE PATTERNS ARE DEPENDENT ON SITE CONDITIONS. SEE CURLEXY® AND RECYCLEX® TRM STAPLE PATTERN GUIDES FOR DETAILS.



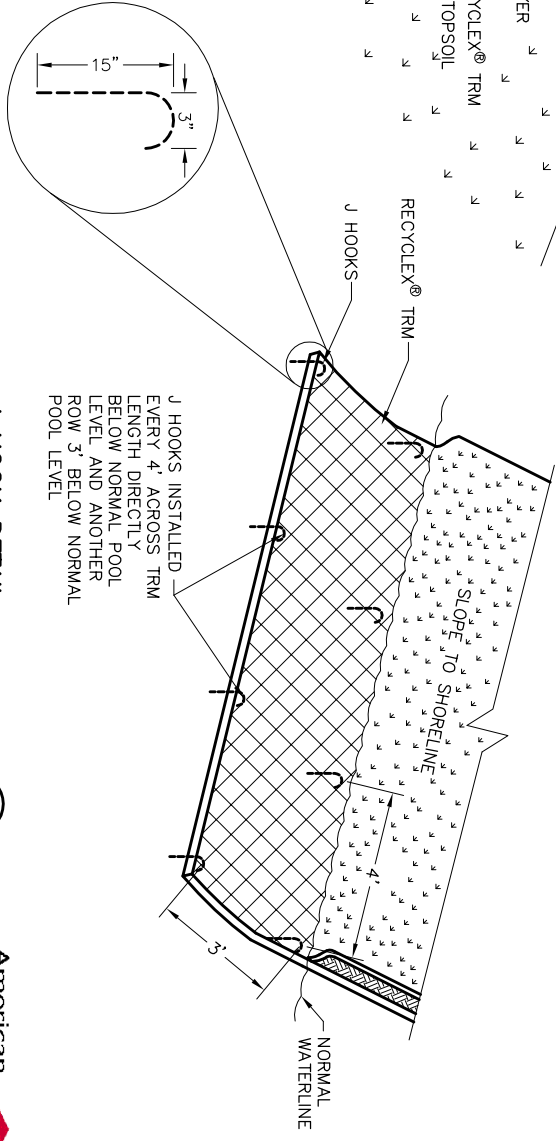
3D APPLICATION VIEW
NO SCALE

1
20



CROSS SECTION DETAIL
NO SCALE

2
20



J HOOK DETAIL
NO SCALE

3
20

NO.	BY	DATE	REVISIONS	PROJECT MANAGER CHECKED BY: APPROVED BY:	AMERICAN EXCELSIOR COMPANY ARLINGTON, TEXAS	SHEET DESCRIPTION SINGLE RECYCLEX®/CURLEXY® SYSTEM SHORELINE PROTECTION DETAIL	DATE 10/25/05 SCALE NONE	DRAWN BY PROJECT NO.	SHEET NO. 20
-----	----	------	-----------	--	--	--	-----------------------------	-------------------------	-----------------

